

D-TEC[®] CB Kit

Canine Brucellosis Antibody Test

Rapid. *Results in 2 minutes.*

Sensitive. *Reliably identifies negative dogs from those potentially infected.*

Easy. *Simple to perform RSATs, no special equipment required.*

Convenient. *Clean and disposable for quick in-clinic use.*

Long Shelf Life. *36 months from date of manufacture.*



CORPORATE HEADQUARTERS
12200 NW Ambassador Drive, Suite 101
Kansas City, Missouri, USA 64163
+1 800-228-4305

SYNBIOTICS EUROPE SAS
2, rue Alexander Fleming
69367 Lyon Cedex 07 France
+33 4 72 76 11 11

SYNBIOTICS

www.synbiotics.com

D-TEC® CB Kit

Canine Brucellosis Antibody Test

Canine brucellosis is a chronic infection by *Brucella canis* that causes generalized lymphadenitis and mild to severe reproductive disorders. Symptoms in the male include prostatitis, epididymitis, scrotal dermatitis, testicular atrophy and impotence. Females may experience vaginal discharge, infertility, resorption, and abortion which typically occurs in the final two weeks of gestation.

Because of its zoonotic potential, suspect patient samples should be handled cautiously.

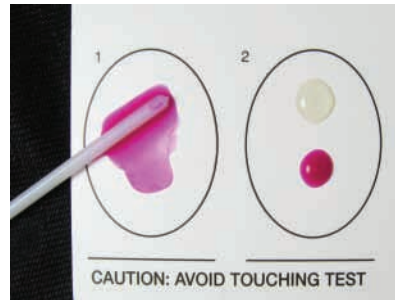
The American Kennel Club (AKC) recommends a confirmed negative status prior to breeding.



Two Rapid Slide Agglutination Testing Methods for a Presumptive Diagnosis of Canine Brucellosis

Performing the RSAT*

1. Place 1 drop of control in one test circle and 1 drop of patient sample in the other. Place 1 drop of agglutination antigen in each test circle. Mix the components of each circle together with a fresh stir stick end so the mixture is spread to the perimeter of circle.

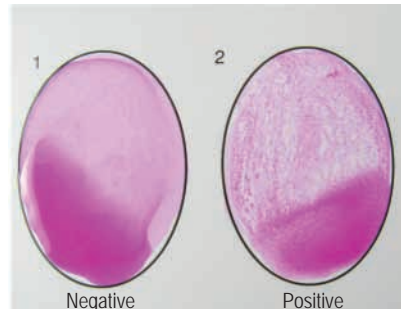


2. Gently rock the card for 10 - 15 seconds. Place on flat surface and observe for agglutination no longer than two minutes.

Interpretation:

If no agglutination occurs in the patient circle, the sample is negative.

If the patient sample agglutinates, perform the 2ME-RSAT procedure.



Performing the 2ME-RSAT *

1. Add 2 drops of serum into a tube. Add 2 drops of 2 ME solution to same tube and mix.
2. Place 1 drop of this mixture onto a new reaction circle. Place 1 drop of antigen in the same circle and mix together with a fresh stir stick end so the mixture is spread to the perimeter of circle.
3. Gently rock the card for 10 - 15 seconds. Place on flat surface and observe for agglutination no longer than two minutes.

Interpretation:

Negative Result: If no agglutination occurs, the dog may be in the early stages of infection or the serum may contain non-specific agglutinins to *B. canis*. Retest the dog using 2ME-RSAT in 30 days. If presumptively positive, then the sample should be subjected to cultural examination.

Presumptively Positive Result: If agglutination occurs, the dog is presumptively positive for *B. canis*. The sample should be subjected to cultural examination for *B. canis*.

*For complete directions, refer to directional insert accompanying product itself.